

Portland CEMA Inc. - Council for the Encouragement of Music and the Arts

Newsletter - July 2006

President's Report

Amended AGM Date

As the end of our CEMA year approaches I want to urge all groups to note the AMENDED DATE for our AGM. The NEW DATE is Sunday 23rd July at 2 pm. All groups are expected to present a brief report of the year's activities, notify members of your new office bearers, and present a balance sheet to our treasurer at the meeting.

Nomination forms are included with this newsletter and should be returned to Secretary, PO Box 385, 7 days before the AGM. All positions have been declared vacant. Secretary Sue Podger has indicated that she will not be re-nominating, and we thank her for wonderful service in the role of secretary. I would like to add a personal thanks to Sue for her support and good humour during some issues which have been at times "tiresome and challenging" to say the least!

Being on executive is an enjoyable task, we meet once a month, and have a limit of 2 hours on meeting times. Most months discussions and deliberations do not take 2 hours. There are other ongoing tasks throughout the month. Please consider joining us.

COMMUNICATION within and across the 13 CEMA inc groups, and between us and other institutions such as the Glenelg Shire Council, Regional Arts Victoria, and Arts Victoria is imperative, so that the best use of limited resources (human and financial) can be made.

If you are a member of any of these groups: Portland Artists Society, Portland Choral Group, Book Discussion Group, CEMA Craft group, Fibre Group, CEMA film group, Historical Society, Leadlighters Guild, portland bay press, Poetry Group, Pioneer Quilters, Portland Community Theatre Group, and Woodturners Guild. Encourage other members of your group to attend the AGM. Each group is to arrange a plate of scones (enough to feed your group) to contribute to a shared afternoon tea.

Blithe Spirit

"BLITHE SPIRIT" written by Noel Coward, and performed by professional and amateur groups world wide, will be performed by our own Theatre Group at the end of July. Please get the "word of mouth" publicity started. This seems the best way to fill the auditorium! IF WE ARE TRULY ABOUT ENCOURAGING MUSIC AND THE ARTS IN PORTLAND, START WITH YOUR OWN FAMILIES, NEIGHBOURS AND FRIENDS, AND SUPPORT THE THEATRE GROUP. An enthusiastic audience on opening night WILL guarantee a sell out season.

CEMA Members have been offered tickets at the CONCESION rate for this CEMA theatre group production. A current membership list will be provided to the Glenelg Shire Arts staff for this production.

Nancy Malseed Exhibition

If you haven't taken the time to look at the Nancy Malseed exhibition at the Portland Arts Centre, I urge you to do so. The exhibition opening was a pleasant evening, with Tim Malseed and Joy Davis speaking about Nancy. Nancy's connection with CEMA and some of our early members like June Hedditch, was highlighted in the speeches. The catalogue notes make for interesting reading.

Thanks to Warren Mars for continued fine work with the camera and computer on our behalf!

July will be another big month in the Arts,
Enjoy it

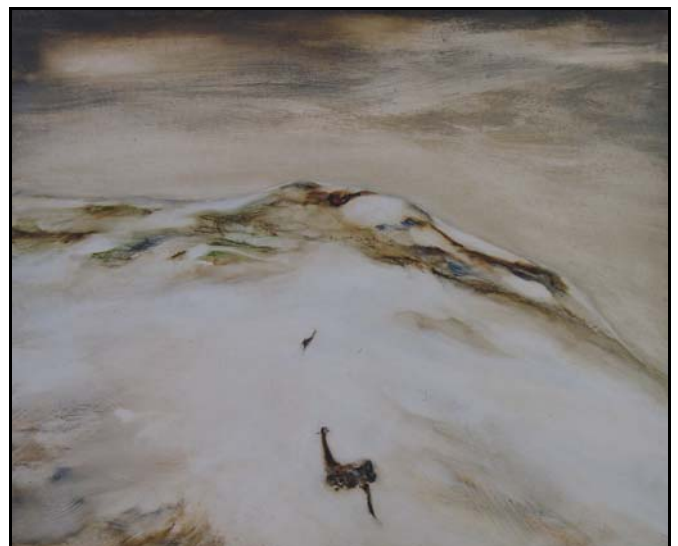
Jan Colliver (President)

Membership Secretary's Report

Welcome to several new CEMA members. Your membership will carry through to the 2006-2007 year. The membership has reached 200. Apart from large sporting group memberships we can be very proud of this achievement.

We look forward to seeing you all at the AGM on Sunday afternoon 23rd July.

Bill & Bev Martin (Membership Secretaries)



"Dunal Landscape" from the "Nancy Malseed - A Retrospective" exhibition at the Portland Arts Centre

Nancy Malseed Retrospective

This superb exhibition tells you a lot about Nance and her dedication to her art - delicate etchings, monoprints and bold oils depicting her beloved Cape Bridgewater environment. She and her friends - including June Hedditch, Grace McGugan and others - revelled in the beautiful environment of this district and responded to it in writing, film-making and art. They were very generous in sharing their talents, but always made sure they had lots of fun.

The catalogue has family reminiscences about her life and era, and lots of information about the pictures. It was produced by the Hamilton Art Gallery, which curated the exhibition and owns many of her works. It is an excellent document.

Nancy was a strong supporter of CEMA, which in turn was able to nurture her talent. She entered the Art Competitions between 1960 and 1975; her works were among many acquired for the Portland Art Collection, and two of Portland's oils are in this exhibition. As well as entering the competition Nance frequently assisted CEMA with hanging the Art competition entries. Local people were also able to acquire her work at these showings. When the Arts Centre was built in 1974, Nancy Malseed was the first artist to run classes there under the auspices of CEMA, which then ran the building and all activities.

Members can be very proud, as not only is the exhibition shown to its best advantage in the Arts Centre spaces created by CEMA; it also shows the excellence of this small gallery. Dimity Phillips, Collections Curator, has also demonstrated her skills in showing Nancy Malseed's paintings to their best advantage. To all CEMA Inc. members and friends - don't miss this highlight of the Glenelg Shire exhibition calendar. This exhibition at the Portland Arts Centre closes June 30th.

Oh yes - another thing -

Thanks to all of the people who have generously given to the CEMA Inc. Public fund in the past year - some receipts are included in this Newsletter; more to come in future issues.

Lex Chalmers



Sheila Swain - "Old House Avoca"

CEMAFILM

present:

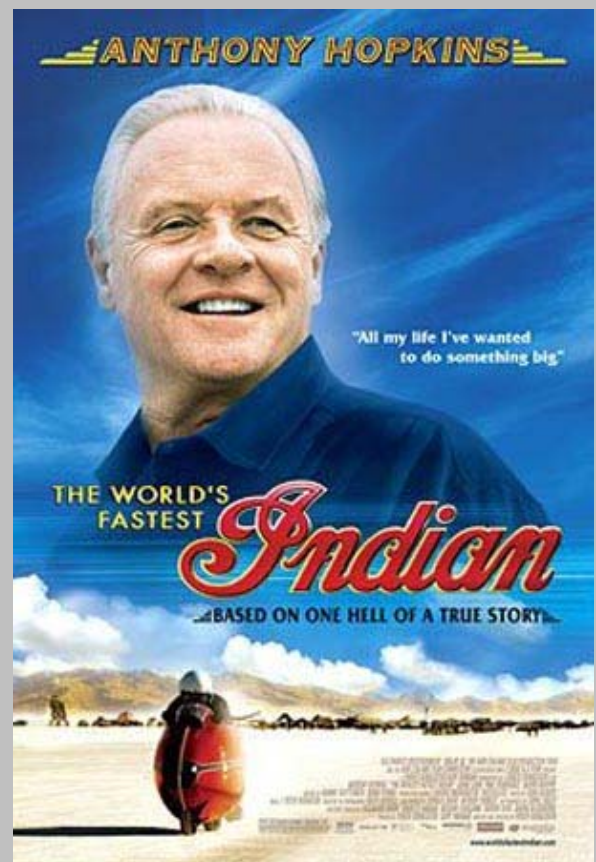
The World's Fastest Indian

Roger Donaldson, 2005, PG

Starring Anthony Hopkins as Burt Munro, a man who never let the dream of youth fade. After a lifetime of perfecting his classic Indian motorcycle, Burt set off to test his motorbike on the salt flats of Utah.

Portland Arts Centre,
Friday, 14th July, 7.30 pm
Sunday, 16th July, 2 pm

Tickets at the door.



CEMA Online

I have finally put the finishing touches to the CEMA website front page, with the inclusion of a collage of pictures of many of the things that CEMA represents. I hope you like it.

The new web host allows us to gather useful statistics regarding the usage of our website. The site is currently averaging around 70 visits per day, most of which are from the USA.

I have put the Nancy Malseed exhibition up on our website. Thanks to Tim Malseed and the Hamilton Art Gallery for granting permission.

Warren Mars (Webmaster)

Jackie French's Hitler's Daughter

Did Hitler's daughter, Heidi, really exist? What if she did?

Four country children waiting in the rain for the school bus take turns telling stories.

This intriguing play, based on a popular book by Jackie French, poses powerful questions about a frightening period in history.

11.00 am & 8.00 pm, Friday, 30 June
Portland Arts Centre

Adult \$12 Child \$8

ARTISTS' SOCIETY

A successful exhibition of Sheila Swain's paintings was held at the Arts Company from June 10 - 17. Many of her friends gathered on the 11th for afternoon tea and to say their farewells. Paintings that haven't been sold will remain at the Arts Company.

Thursday afternoon at 1 pm is our meeting day, so come and join us. Bring whatever you are working on. All welcome.

Betty Trewavis (Convenor)

Fibre Group

We have welcomed two new members in the last three months Rose Atkin and Pauline Donovan.

We would welcome anyone interested in working with fibres. We have talented members who are able to teach spinning, felting, knitting, crocheting and weaving plus other small projects.

Three members will attend the craft school at Glenormiston from Sunday 25th to Thursday 29th June.

Seven or eight members will attend the craft day at Yulecart on Monday 10th July. Members are asked to knit or crochet a baby shawls for the hospital. Varying sizes 30 cm x 30 cm and 60 cm x 60 cm

Josephine Koch (Secretary)

Historical Society

July Meeting is on Thursday 6th in the Portland Arts Centre at 2.30 pm. AGM program, birthday surprise.

History House Display is "Best Foot Forward".

Betty Vivian (President)

Leadlighter's Guild

Guild News

At our AGM on March 29, it was decided to bring our membership subscriptions into line with those of CEMA, which follow the financial year from July 1 to June 30. Those renewing guild memberships from March of this year will remain financial until June 30 2007. From July 1, both CEMA and guild memberships are to be paid to the guild treasurer.

A new key-tag system will commence at the start July. From that date, IGA staff have been asked not to issue the key unless you show your tag. Anyone losing a key will have to pay \$20 for a replacement.

We currently have classes running on a Thursday evening. On Wednesdays, we have two working groups: afternoons 1 pm to 4 pm, and evenings from 7.30 onwards. If we receive sufficient interest, we will be holding some foiling workshops in the near future, and maybe a field trip.

The Arts Company Shop

As a user of Arts Company facilities, guild members are expected to volunteer in the shop. We are rostered on one morning per week, and one Saturday in every seven weeks. However, we realise that some people may not want to do this, so you may be able to volunteer elsewhere in the guild while some of us do your turn on the shop roster. Please contact Miriam or Heather if you do not want to do shop duty.

Meetings

Our next quarterly meeting will be on July 6 from 7.30 pm. Bring along patterns for a swap night while we discuss guild issues.

Next meeting, July 6th, 6.30 pm onwards. Please bring along some money for a pizza tea and we will have a short meeting as well as a pattern swap night.

Classes continuing on Thursday nights, if you know of anyone who may wish to learn leadlighting please contact Miriam, Heather or Ian.

Happy Glassing,
Miriam Ray (Convenor)



Bonita Geraldene, Steve Grant & Sue Ireland rehearse for "Blithe Spirit"

Theatre Group

Due to unforeseen circumstances, the theatre group have had to postpone their production of Blithe Spirit until the 21st, 22nd, 28th, and 29th of July.

CEMA members will be able to see the production at the concession rate of \$15.

Our set looks great, especially on seeing the photos of it taken by Warren.

Big thanks to Jan Colliver, Bev Martin, Warren Mars, Karl Hatton and CEMA Inc for all the assistance they are giving the theatre group with publicity and moral support! Big thanks to all the cast and crew for persevering for the extra time; we are extremely glad you've stuck with it!

Sue Ireland

Monsieur Camembert

Monsieur Camembert fuses the wild rhythms of Eastern Europe with tango and latin music, swing, jazz, tarantella and French musette with a contemporary edge.

Gloriously melodramatic and extraordinary musical prowess from a group that has won two ARIA Awards.

8.00 pm, Saturday, 1 July
Portland Arts Centre

Adult \$25 Concession \$20 Student \$10 Family \$60

Stick It

TETRAFIDE PERCUSSION is one of Australia's hottest young percussion groups, featuring influences from Asia, Africa, the South Pacific and Latin America. Their concerts have left audiences worldwide awestruck.

8.00 pm, Saturday, 8 July
Portland Arts Centre

Adult \$25 Concession \$20 Student \$10 Family \$60

The Drovers Wife & The Bush Undertaker

Two popular short stories by HENRY LAWSON are brought to life on the stage in this highly entertaining, innovative production by Melbourne-based Petty Traffickers.

Two Performances!

8.00 pm, Wednesday, 12 July
Portland Arts Centre

8.00 pm, Thursday, 13 July
Casterton Town Hall

Cost for both performances:
Adult \$25 Concession \$20 Student \$10 Family \$60